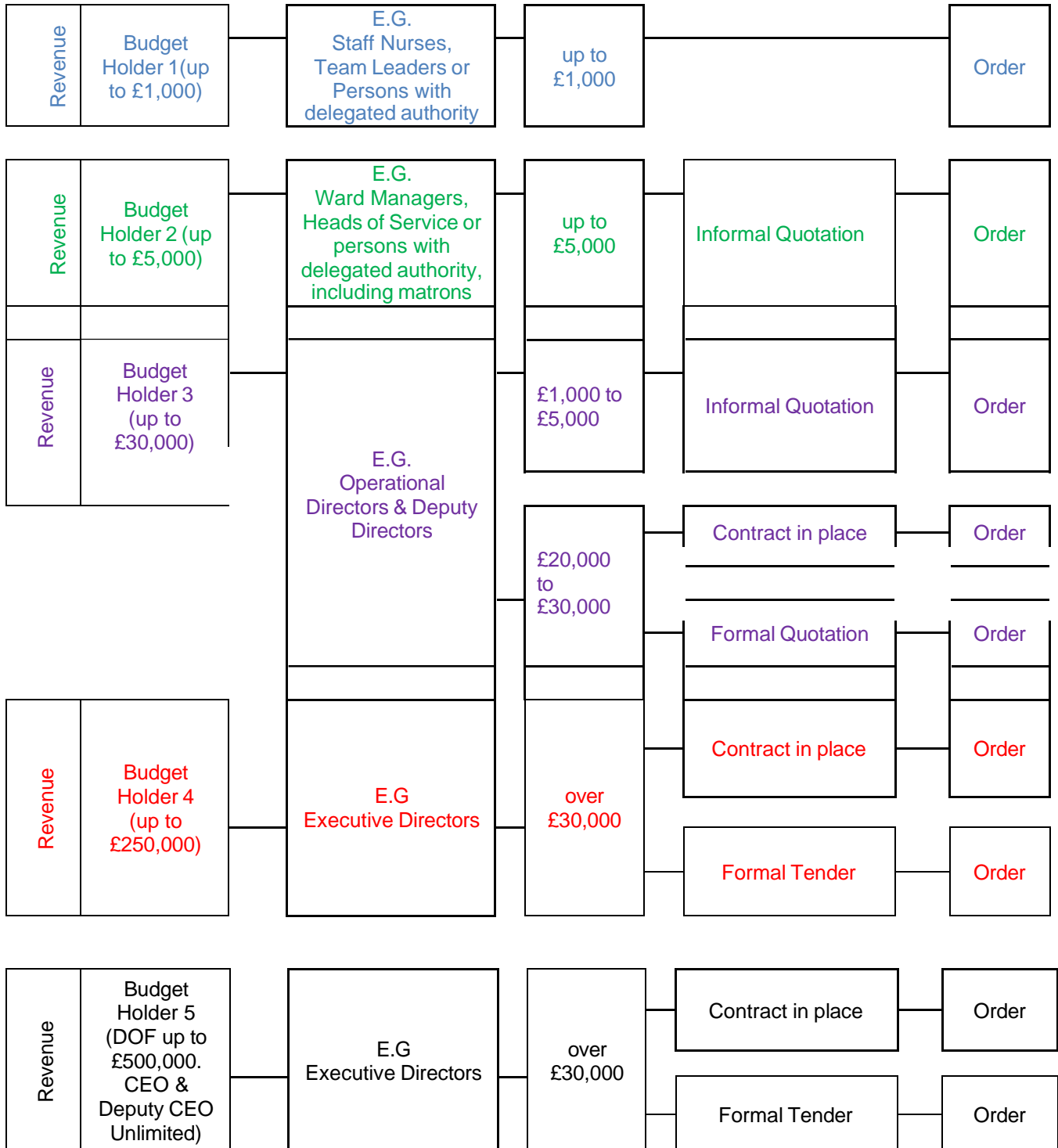


REVENUE AND CAPITAL EXPENDITURE:

Delegated levels of authorisation for budgeted expenditure are as follows:



Capital Expenditure:

Orders and quotations/tenders should follow the same procedure as the revenue expenditure within the delegated capital limits stated in 2.7 below.

- Up to £20,000 the Trust must receive an informal quotation before placing an order.
- Over £20,000 the Trust must receive a formal quotation, unless there is a Contract in place
- Over £30,000 the Trust must receive a formal tender, unless there is a Contract in place